



# **Governance**

of the Seattle Waldorf School

**Governance**

**Operations**

**Parent Involvement**

**Communication**

**Questions & Concerns**

# Governance

# Board of Trustees

President

Vice  
President

Secretary

## Board of Trustees

President

Vice  
President

Secretary

### Responsible for:

- Broad Operational Outcomes
- Link to General Public
- Fiduciary

### Accountable to:

- General Public
- State Law through Articles of Incorporation

**Board of  
Trustees**

**Policy Governance**

**VISION**

**Ends**

**25 Evolving  
Policies**

**OPERATIONS**

**Means**

**48 Evolving  
Executive Limitations**

## **Board of Trustees**

**25 Evolving Policies**

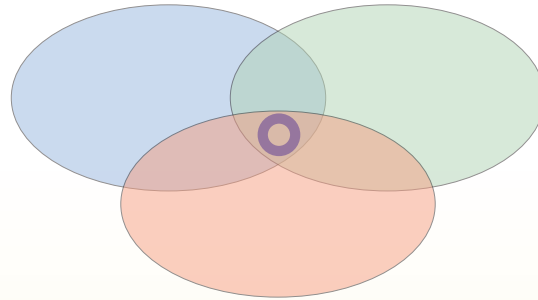
## **Heads of School**

---

<b>Head of Administration</b>	<b>Head of Pedagogy</b>
-----------------------------------	-----------------------------

**48 Evolving Executive Limitations**

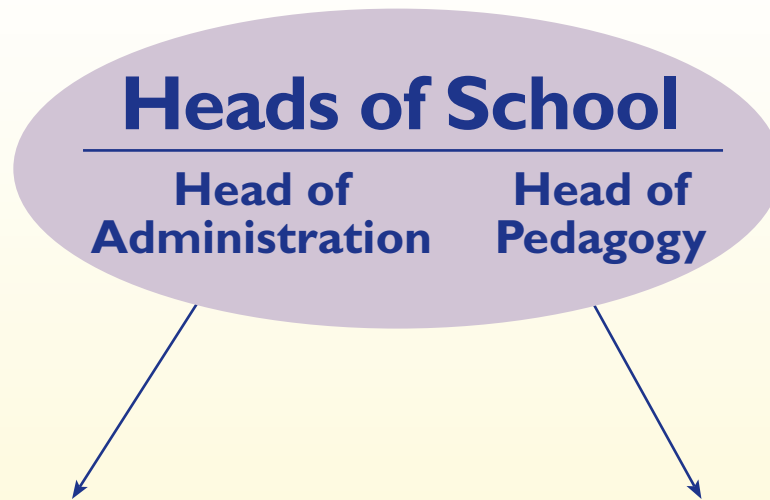
**Accountable to the Board**



## Heads of School

---

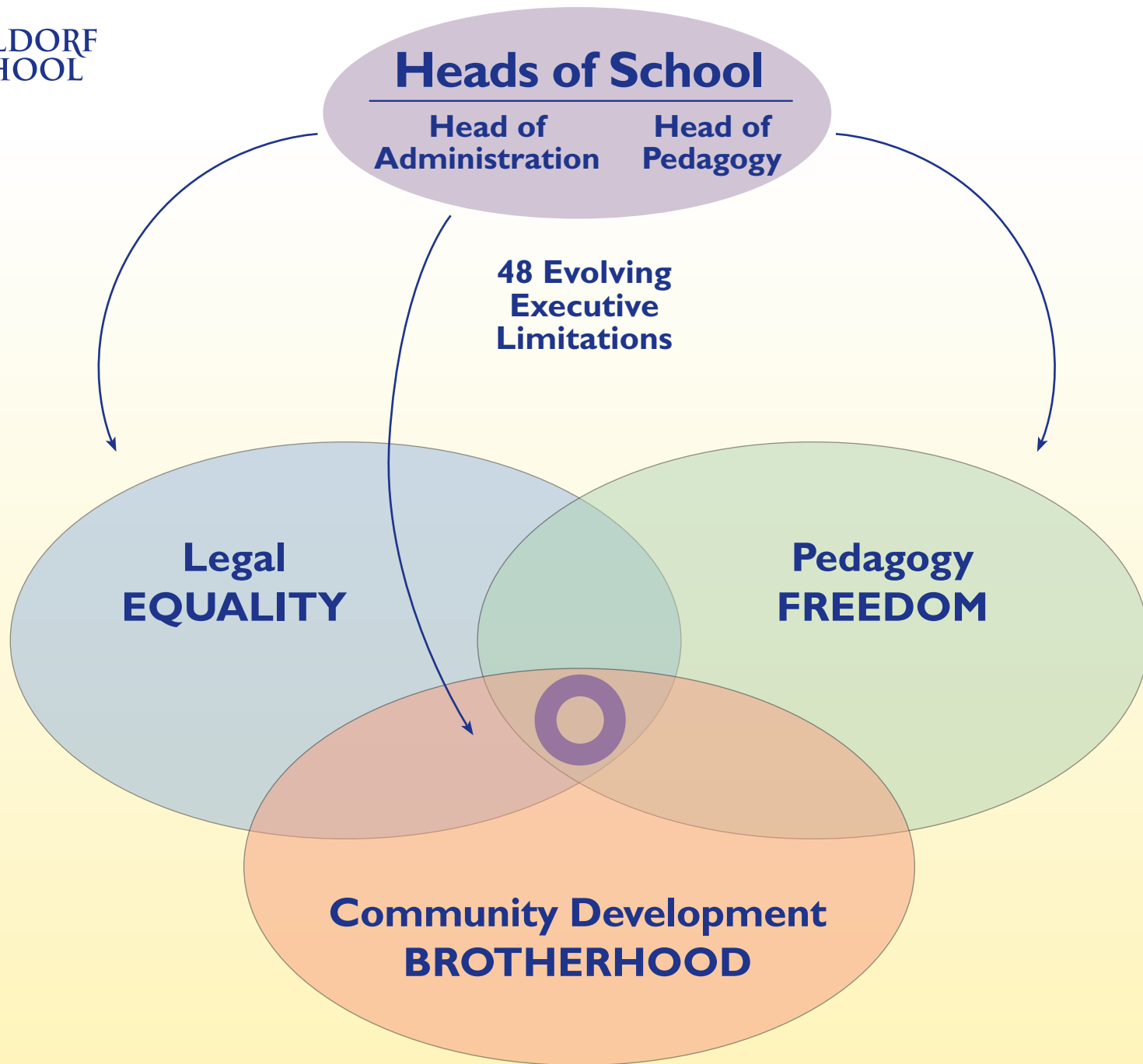
- Integrate Pedagogical, Legal, and Development Capacities and Information
- Ensure Coherent Communication
- Monitor for Balance and Fairness in Decisions and Practices



- **Legal**
- **Community Development**

- **Pedagogy**

# Operations



# Pedagogy

## FREEDOM

## Head of Pedagogy – Responsibilities

---

### **Pedagogical Carrying Group (PCG)**

Manages three faculty workgroups led by conveners:\*

- Programs & Curriculum
- Practical Needs
- Human Resources

### **PCG Is Composed of:**

- Three Faculty Division Chairs\*
- College Chair
- Workgroups Conveners\*

\*Elected yearly by faculty

Each faculty member voluntarily participates in one of the three workgroups.

# Pedagogy

## FREEDOM

### Faculty

Head of Pedagogy

---

#### Early Childhood

- Teachers
- Assistants

#### Grade School

- Class Teachers
- Assistant
- Special Subject Teachers
- Special Subject Assistants

#### High School

- Teachers
- Adjunct Faculty

Sections meet weekly to coordinate activities.

Faculty meet weekly as a “Collegium” for research and study.

**Legal  
EQUALITY**

**Head of Administration – Responsibilities**

---

- Federal and State Regulations
- Tax Law
- Employment Law
- Financial Planning
- Site Planning

**Finance Workgroup**

- Business Manager
- Board Members
- Parent Volunteers

**Site Development**

- Board Members
- Parent Volunteers

## Community Development

### BROTHERHOOD

## Fundraising; Enrollment & Admissions, Marketing & Public Relations

Head of Administration

---

### Parent Association

- Parent Association Members
- Class Parents
- Parent Volunteers
- Social & Community Events

- Director of Admissions
- Contractors

# Parent Involvement

**Community  
Development**  
**BROTHERHOOD**

## **Parent Association Members**

---

- Based on Individual Initiative
- Each Class is Represented

Parent Association is governed by its constitution.

## **Parent Association**

---

- Parent Association Chair
- Parent Association Co-Chair
- Volunteer Program Coordinator
- Social Events Coordinator
- Adult Education Coordinator
- Community Fund Treasurer
- Class Parents Liaison
- School Beautification Coordinator

## **Parent Association Vision, Mission & Values**

---

### **Vision**

SWS Parent Association embraces the vision of an engaged and valued parent body in service of the actualization of the school's mission.

### **Mission**

The mission of SWS Parent Association is to facilitate the participation of parents in the unfolding of the school's mission.

### **Core Values**

The Parent Association adopts as its fundamental values a commitment to working in synergy with the underlying principles of Waldorf education, and a commitment to generate, welcome, and honor parents' participation in the life of the school.

## **Class Parents**

---

- Communicators
- Assistants to the Class Teacher

The role of the class parent is defined in the Class Parents Guide.

## **Parent Volunteers**

---

“The healthy social life is found when in the mirror of each human being the whole community finds its reflection, and when in the community the virtue of each one is living.”

Rudolf Steiner



**Community  
Development**  
**BROTHERHOOD**

## **Parent Volunteers**

---

- Artistic Abilities
- Professional and Technical Skills
- Social Working
- Production of Social Events
- Practical Skills
- Community Service Liaison
- Extra-Curricular Programs
- Festivals
- Promotion & Outreach
- Housing

## **Parent Volunteers**

---

### **Festivals**

- Michaelmas
- Winter Faire
- May Faire

### **Dances**

### **Adult Education**

### **And More...**

Our SWS Skills Survey is available online.

# Communication

## Communication

---

School-Wide  
Regular Newsletter  
**“Connection”**

School-Wide  
or Class-Specific  
**Emails**  
As Needed

**Website**

**“Perspectives”**  
4 times per year

**Event Flyers  
Post Cards**

# Questions & Concerns

# Questions & CONCERNS

## Where Do You Go?

---

### You Can Bring

- Any Concern
- Any Question
- Of Any Kind
- At Any Time

To Either of the Heads of School,  
as You Prefer.

### Individual Appointments

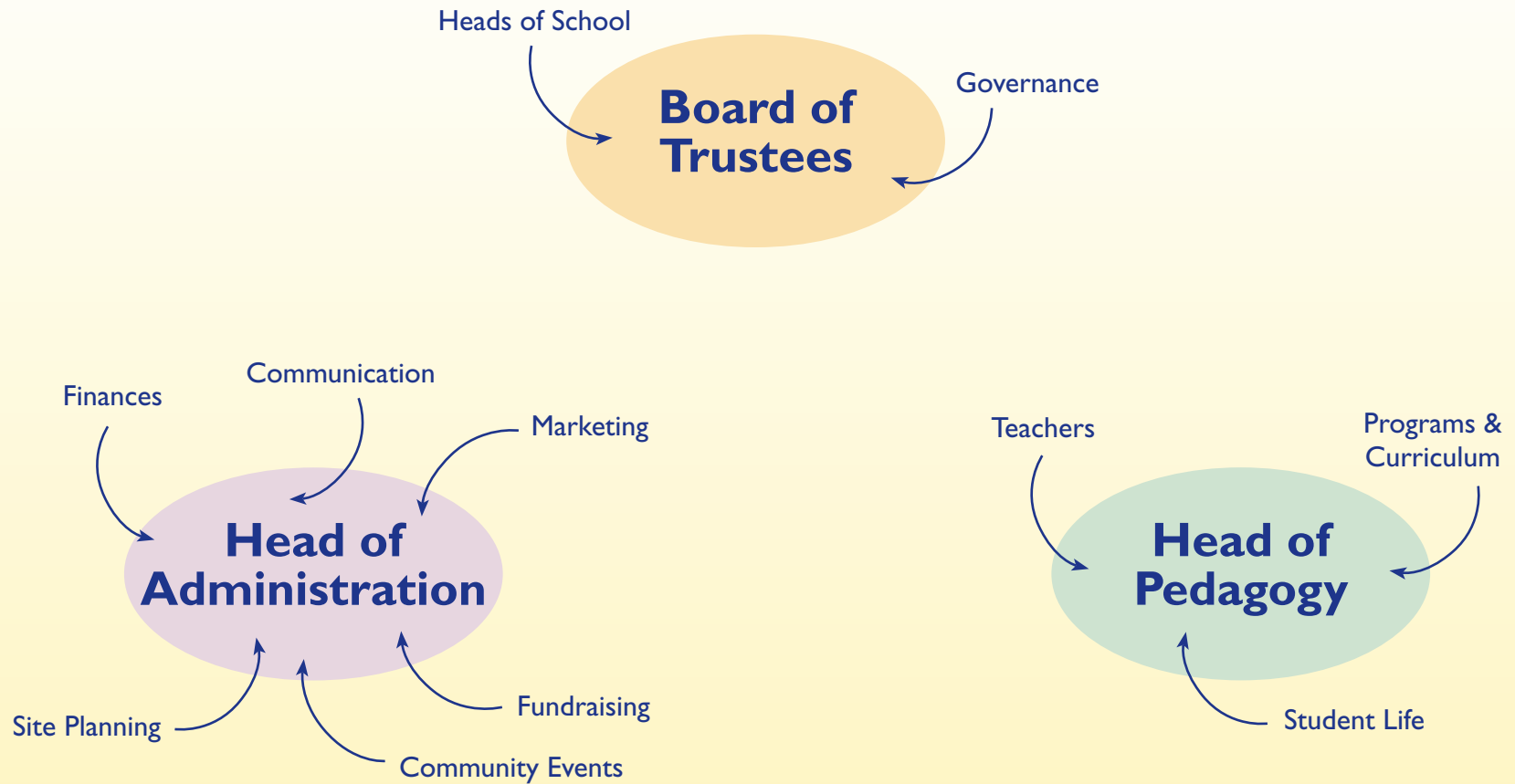
- Call Reception
- Email

[nfabrie@seattlewaldorf.org](mailto:nfabrie@seattlewaldorf.org)

[gkline@seattlewaldorf.org](mailto:gkline@seattlewaldorf.org)

# Questions & CONCERNS

## Where Do You Go?



# Organizational Chart

