

We educate our students to impart purpose and meaning with courage, and respond to the needs of the world and

be free human beings who to their lives, who meet life with initiative and creativity their fellow human beings.



SEATTLE
WALDORF
SCHOOL

30
30 YEAR ANNIVERSARY

SEATTLE WALDORF SCHOOL • 1980-2010

PROGRESS REPORT 2009-2010



GRADE SCHOOL & OFFICE

2728 NE 100th Street
Seattle, WA 98125
T: 206.524.5320 F: 206.523.3920

KINDERHAUS

4919 Woodlawn Avenue N
Seattle, WA 98103
T: 206.545.9001

HIGH SCHOOL CAMPUS

160 John Street
Seattle, WA 98109
T: 206.522.2644 F: 206.522.2631

www.seattlewaldorf.org

GRAPHIC DESIGN
Higgins Design

PHOTOGRAPHY
Thank you to Jesse Michener,
and to all the parents, staff and students
who provided photography.

To conserve resources, this progress report
is distributed electronically, however we will
gladly send you a hard copy; just send us an
email at sws@seattlewaldorf.org or call the
main office at 206.524.5320.

The Seattle Waldorf School admits students
of any race, color, national and ethnic
origin, to all rights, privileges, programs,
and activities generally accorded or made
available to students at the school. SWS does
not discriminate on the basis of race, color,
sexual orientation, national and ethnic origin
in administration of their educational policies,
admissions policies, scholarship and loan
programs, and athletic and other
school-administered programs.

The Seattle Waldorf school is a member of
the Association of Waldorf Schools of North
America (AWSNA) and a candidate member
of the Pacific Northwest Association of
Independent Schools (PNAIS).



FROM THE PRESIDENT OF THE BOARD

As we began the 2009–2010 school year, I admit to feeling a little daunted. Reviewing our work plan, it seemed inconceivable to me that we could get through to the other side. None of the tasks were small. All were important. As I greeted the Board at our first meeting, I met the glazed eyes of the five new members and tried to sound more confident than I felt. We went through the list: complete the update to the strategic plan, engage deeply in the accreditation Self-Study and write the Board sections of the document, carry out a search for the permanent pedagogical co-director, continue our commitment to transparency and outreach, and update our governance policies in areas of need. So it began...we doubled our meeting frequency. We formed committees and re-formed them. The need to work at peak level when more than half the Board was serving their first year was indeed daunting. But we persisted.

In the fall we hosted two parent outreach events where we debuted our new informational slide show on how the Board works. A small but committed group of parents engaged us on the Big Issues that mattered to them. We launched our international co-director search. We engaged with the administration and faculty to refine and reflect on our mission statement, diversity statement, and the issue of site. With sealing wax and duct tape, we hosted the second year of our now-annual Winter Celebration to bring together the leaders, past and present, of the Waldorf education movement in the greater Seattle area. My heart filled with love and gratitude as I bathed in the glowing lights of our winter spiral.

In the spring we found the ideal candidate for our pedagogical director – bringing over thirty years of expertise and a deep commitment to our school – in our own Nettie Fabrie. The writing fell behind. Our patient-but-persistent Self-Study Coordinator, Mary Ellingson, guided by our indefatigable Geraldine Kline, cajoled, negotiated, and, mostly, supported us in finalizing the strategic plan update and accreditation Self-Study sections.

And so we stand facing a new year with its challenges. The Self-Study has been submitted to the joint PNAIS and AWSNA accreditation team for review. The eagerly-anticipated accreditation visit took place in October. The current board leadership, having extended our service to support that important milestone, will transition to a new team. We are parsing out the tasks for the strategic plan into the right set of goals for the coming year. We are looking forward to celebrating the 30th anniversary of the birth of our school and honoring those who made it happen. Buoyed by our accomplishments, and confident in our mission, we stand ready.

Michelle Frame

Michelle Frame, Board President

BOARD OF TRUSTEES 2009–2010

Board President
Michelle Frame

Board Vice President
Richard Watkins

Board Secretary
Kalika Robinson

TRUSTEES

Kate Golden
Norm Smith
Tom Kayser
Chaya Keefe





Fifth Graders go for the Olympiad challenge.



Eighth Grade students direct themselves in Winnie the Pooh.



Left and Below:
Kindergartners brave the
elements daily, rain or shine.



STRATEGIC GOALS 2010-2015

- Develop supportive and thriving relationships within our school community.
- Develop fruitful partnerships with our extended community.
- Work with the extended Waldorf school community to prepare our students to responsibly meet contemporary society.
- Attract, support and retain capable, vibrant and inspired Waldorf-trained teachers who approach teaching with insight, imagination and enthusiasm.
- Renew the Board's system of policy governance as a healthy, living model that responds to the needs of the school community with courage, initiative and creativity.
- Review and integrate the reflective practices of the school into an institutional process.
- Assure sustainable financial operation of the school while developing new sources of revenue.
- Develop a multi-year facilities plan for remodeling, adding to, and/or moving school campus to one or more locations.

THE GIFTS OF A WALDORF EDUCATION

HIGH SCHOOL WORK EXPERIENCE

A cornerstone of the integrated high school curriculum is the work experience program. Through working with others, students discover who they are in the world.



Tenth graders repair the Lousignont Creek bridge at Hyla Woods, during the forestry management block.



Plein Air Drawing at Hyla Woods, by Gage Hess.

Below: Truly understanding where our food comes from – harvest time at Jubilee Farm.

FROM THE HEADS OF SCHOOL

Dear Parents and Friends,

As Directors, each day brings us the extraordinary gifts of Waldorf education – high school students returning from a week of forestry management and biodynamic farming, with portfolios full of sketches and faces beaming with pride for the work accomplished. Talented middle school students performing their class plays, filled with confidence; Grade school students on their way to the Olympiads or their first field trip, eager to discover and meet a challenge; Preschoolers in full rain-gear, braving the Seattle elements on their daily walks. We witness the ever-renewed promise of a world filled with free, moral, and integrated human beings, such as we ourselves strive to be.

Since 1980, our faculty has held a courageous vision – a world and a future built on participation, collaboration, and commitment. Each day our teachers imbue their classrooms with imagination, creativity, and passion, guiding their students through the joyful and at times perilous journey of growing up. Each day they fulfill our school's mission – to educate our students to be free human beings who impart purpose and meaning to their lives, who meet life with courage, and respond with initiative and creativity to the needs of the world and their fellow human beings.

In thirty years our school has grown from 17 kindergartners to 362 preschool through grade 12 students, welcomed families into a new Parent & Tot program and completed its accreditation Self-Study this past spring, a milestone in reaching and sharing its maturity. Our three campuses are fast approaching full capacity, and visions for the future are bubbling in the minds and hearts of faculty and parents alike, a celebration of progress, enthusiasm, and courage for the future.

Please join us in celebrating the accomplishments of the Seattle Waldorf School. Your lasting trust, interest, and support are the leading thread upon which we weave the fabric of our vibrant school community. We thank you sincerely for your dedication to our mission, and eagerly look to the next thirty years of Waldorf education in Seattle!

A handwritten signature in black ink, appearing to read 'Geraldine Kline'.

Geraldine Kline
Head of Administration

A handwritten signature in black ink, appearing to read 'Nettie Fabrie'.

Nettie Fabrie
Head of Pedagogy



BUILDING A WALDORF HIGH SCHOOL CURRICULUM

GROWING THROUGH ACCREDITATION

The Accreditation process begins with a very careful self-examination of what we do as a school. Since we are pursuing a dual accreditation with PNAIS* and AWSNA,** this process involved looking at ourselves from many different angles. All of our teachers and staff were involved in this year-long process, resulting in a document that is available on our website: www.seattlewaldorf.org/community/resources/guides.html

Close to 300 questions were answered by individuals and work groups, and many required us all to think anew and articulate values that we had taken for granted, leading us to develop new approaches.

The Accreditation Team, comprised of experienced teachers and administrators, arrived at our school in October for an intense three-day visit. Having read all 250 pages of the Self-Study, with particular attention to their own areas of specialty, their task was to carefully observe and examine all aspects of our school life, and reflect to us how well we do what we say we do. We are very grateful for this process of self-reflection, and to everyone who has contributed to the Self-Study, including the Accreditation Team for their time and expertise.

* PNAIS stands for Pacific Northwest Association of Independent Schools

** AWSNA stands for Associated Waldorf Schools of North America



Students understand the world and express themselves through art. Here, nature art from the Hyla Woods trip.



Meeting the cows – ninth graders at Jubilee Farm.

Below: High School Choir.



Grade nine drawing from Jubilee Farm trip.

ACCREDITATION SELF-STUDY

From the PNAIS portion of the Self-Study:

Question: In what ways does the overall program provide diverse and multicultural perspectives, experiences and materials?

Answer: Through the SWS curriculum, students are introduced to and engage with a wide variety of ideas, historical perspectives, cultures, and hands-on experiences:

- Story curriculum: Starting in the early childhood years, the students hear stories from around the world. This transitions to mythology and later history as the children grow.
- Festival life: Festivals connect the community to experiences of many different cultures. In some cases festivals are celebrated by a single class or grade level, leading to a culture of anticipation within the school (“When will we get to do that?”). In other cases the festival is celebrated more broadly, enjoyed by many in the school community.
- Visual displays: Displays in glass cases, in the grade school lobby, and along hallways engage the community in the school’s multicultural studies.
- Music: Students sing songs and play instrumental pieces from all around the world. High school students may study African drumming.
- Drama: Students produce and attend plays depicting stories and experiences from around the world.

From the AWSNA portion of the Self-Study:

All-School Choir (9–12): The high school choir, comprised of all high school students, builds community and provides the students with awareness through singing, listening to others, uncovering the voice as expression of a ‘resonating being’, and vocal tone. Students work on pitch, rhythmic accuracy and integrity, use of Kodaly solfeggio and Cewin hand signals, sight reading, phrasing and articulation, dynamics, and range of expression. They perform a varied repertoire representing all periods of music history and a wide variety of world cultures (Medieval, Renaissance, Baroque, Classical, Romantic, Contemporary). They sing in many different languages: Nguni, Swahili, Ugandan, Japanese, Korean, Chinese, Latin, Italian, French, German, Romanian, English, and take turns leading vocal warm-ups and conducting vocal selections.

To read more go to:
www.seattlewaldorf.org/community/resources/guides.html



CLICK HERE TO LISTEN TO OUR CHOIR & INSTRUMENTAL ENSEMBLE!

www.seattlewaldorf.org/community/resources/programs.html

FACULTY 2009–2010

Thirty-nine full-time and twenty-one part-time faculty and staff guide students and work toward the fulfillment of our school's mission.

EARLY CHILDHOOD ADMINISTRATION

Barbara Bachmann	Nettie Fabrie
Tim Bennett	Geraldine Kline
Melissa Borden	Tim Love
Whitney Borden	Gabi McCarthy
Gina Burger	Shelly McSweyn
Arian Cabot	Jesse Michener
Holly Koteen-Soule	Meg Petty
Mary Lentz	Haley Stocking
Kelly Murphy	Diana Wolfe
Debora Petschek	Bev Yonge
Martha Swain	
Lisa Wolfe	

HIGH SCHOOL ADMINISTRATION

Lisa Ayrault
Adam Jablonski
Neil Weinberg

EXTENDED CARE

Martina Brimmer
Annika Fae
Shannon Murphy

HIGH SCHOOL FACULTY

Laurie Andres
Dana Ashton
Lisa Ayrault
Julie Beckman
Martina Brimmer
Atsuko Chiga
Patricia Costa Kim
Michael Fleming
Oliver Fraser
Jeff Hipolito
Michael Kline
Bob Koon
Flora McEachern
Bryan McGriff
Darwin Nordin
Linda Povinelli
Gordy Ryan
Susan Saunders
Cris Smith
Morgan Sobel
Glen VanDerPloeg
Neil Weinberg

GRADE SCHOOL CLASS TEACHERS

Susan Brudi
Sara Canady
Kate Golden
Wim Gottenbos
Michael Kline
Mark Perry
Kristen Rice
Britt Urquiza

Dana Ashton
Anna Chrysler
Patricia Costa Kim
Naoki Hirata
Janette Jacobson
Elaine Klansnic
Michael Kline
Iris Kulasic
Gretchen Matis
Flora McEachern
Shannon Murphy
Michael Rice
Mari Riksheim
Tiffany Towles
Neil Welch

GROWTH HAS BLOSSOMED

From a single Kindergarten class 30 years ago, Seattle Waldorf School has blossomed into a full preschool through high school program. Our expanding high school attracts Waldorf eighth grade graduates from around the Puget Sound area.

Our most recent growth was achieved with boldness and velocity, yet we did not borrow funds from lending institutions. Enrollment, programs, staffing, salaries, and financial aid continued to grow even in the scariest moments of the economic downturn.

1980 ENROLLMENT	
PROGRAM	ENROLLED
Kindergarten	17

2010 ENROLLMENT		
PROGRAM	ENROLLED	CAPACITY*
Parent & Tot	30	34
Preschool	29	32
Kindergarten	58	59
Grade School	178	192
High School	67	96

*Capacity is determined by the social composition of each class, within the limitations of our physical space.

These accomplishments are now documented in the Accreditation Self-Study, a 250-page document composed collectively by board, faculty, and staff members which presents our "what, why, and how." Read more about the benefits of going through the accreditation process on the previous page.

As we complete our first thirty years of Waldorf education in Seattle, we celebrate our collective accomplishments with pride and enthusiasm for the future.

Below Left: Our current grade school site has come a long way since we purchased it in 1988.

Below Right: One of our first kindergarten classes (1982).

Bottom Row: Our three campuses today.

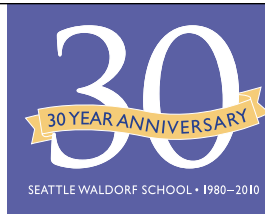


Kinderhaus

Grade School

High School

IMBUE THYSELF WITH THE POWER OF IMAGINATION, HAVE COURAGE FOR THE TRUTH, SHARPEN THY FEELING FOR RESPONSIBILITY OF SOUL. ~ Rudolf Steiner





Grade 3 student harvests grain on a trip to Sunfield farm.

A KALEIDOSCOPE OF OPPORTUNITIES

Our students take walks, jump-rope, folk-dance, and perform Eurythmy. They sketch, paint, sculpt, and build theater sets. They hike mountains and beaches, sleep under tarps and tents, carry food and cook outdoors. They plant, harvest, and sell crops. They sing and play violin, clarinet, and African drums. They test thermodynamics on their hikes and examine rocks on Mount St Helens. They study astronomy and gaze at the stars near Grand Coulee Dam. They make their own lesson books, slippers, and graduation hats. And yes, they also learn algebra and English grammar, geometry and Japanese, surveying and biology.



High school African drum performance at Seattle Center.



Grade 4 in concert at Nathan Hale Performing Arts Center.



Exploring the geological formations at Mount St Helens.



WHAT PARENTS ARE SAYING

My sons came to SWS in middle school. It was like the difference between night and day. They found their love for learning and creativity again.

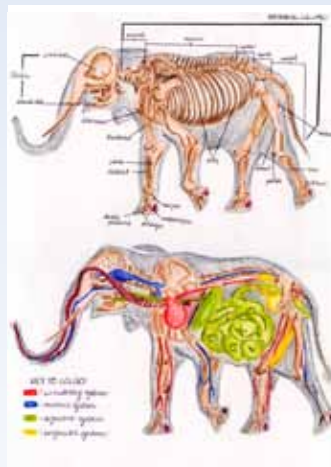
~ Teresa Graham



Grade 8 meteorology lesson book page.

My son is at the high school as a tenth grader this year. He was also there last year for ninth. We so appreciate this wonderful place for him to go to school. The fact that all of you have created a high school so that our son can continue in the Waldorf atmosphere is a life saver.

~ Ann Horton



Grade 11 page from a zoology research project on the elephant.

My kindergartner said "I love school so much that... that... that... I don't even know what to do with myself!"

~ Christina Brinker

2009–2010 INCOME & EXPENSES*

OPERATING INCOME

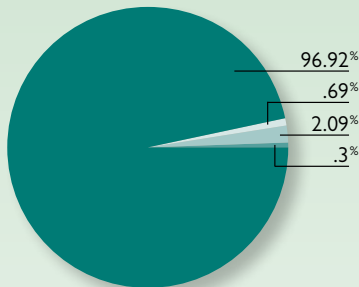
Tuition & Fees	\$ 3,087,621	96.92%
Fundraising	21,870	0.69%
Contributions	66,667	2.09%
Other	9,604	0.30%
Total Income	\$ 3,185,762	100.00%

EXPENSES

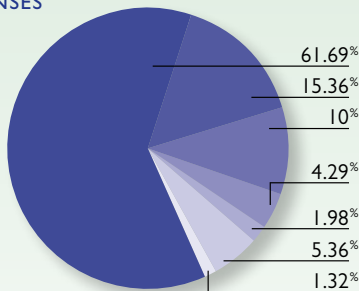
Salaries	\$ 1,900,703	61.69%
Benefits	473,322	15.36%
Facilities	308,089	10.00%
Program Support	132,317	4.29%
Professional Development	60,947	1.98%
Administrative	165,114	5.36%
Other	40,603	1.32%
Total Expenses	\$ 3,081,094	100.00%

NET INCOME \$ 104,667

OPERATING INCOME



EXPENSES



*Pre-audit.

To conserve resources we are publishing this progress report electronically. We will be happy to send you a hard copy – just let us know by calling the main office at 206.524.5320 or sending an email to sws@seattlewaldorf.org.

MAKING A DIFFERENCE...

Many people generously gave of their time and treasure to support the life of the Seattle Waldorf School in the 2009–2010 school year. All gifts strengthen our program, our community, and thus, our ability to accomplish our mission – to educate students who change the world.

...THROUGH DONATIONS THAT PAID FOR:

- Program support in the grade school (assistants and mentors)
- Professional development, including Waldorf training for high school teachers
- Roof renovation and playground expansion, and improvements at Kinderhaus
- Office technology upgrade – replaced the seven-year-old server and workstations at the grade school
- Improvements to the middle school classroom space
- Drum rental, fine and practical arts equipment and supplies
- Grade nine trip to biodynamic Jubilee Farm
- Research into grade school campus expansion



Volunteers help wrestle with a big log in 2009.



Volunteers make May Faire possible.

...THROUGH SHARING TIME & ENERGY

Volunteers make things happen – Board, Parent Association, Class Parents, drivers and bakers.

Volunteers organize and run our community gatherings – Michaelmas, Winter Faire, and May Faire. These community events are central to our community life and are a gift of joyful activities and celebration for our children, families, and friends.

MEADOWBROOK FARMERS MARKET

Volunteers started the Meadowbrook Farmers Market – a separate non-profit organization, dedicated to cultivating a sustainable and healthy community by offering high-quality local organic and bio-dynamic foods, artisan goods, and educational opportunities. The market, now in its second year, provides a joyful oasis to the neighborhood of the grade school campus, and delicious food and live music on Sundays from June through October.

The cob oven, built by volunteers during educational sessions offered at the beginning of the market season, is now used by Briar Rose Kindergarten every week.

VOLUNTEERS MAKE IT ALL POSSIBLE

Volunteers make possible the many class outings and in-class cooking with students for special occasions, they gather and construct elaborate costumes for our many plays, they help with painting classrooms and stuffing hundreds of envelopes and much more.



Building the cob oven at the farmers market.

AUCTION DONATIONS

509 Wines
 A-I Piano
 Albert Zeman
 Alex LaVilla
 Andrea Marquardt-Preiss
 Andrew Smith
 Anne deMille Flood
 Anthony Callaway
 Bee's Knees
 Beth Morrigan & John Van Leer
 Bev Yonge
 Brady Millard-Kish
 Butler Transportation
 Candida & Kevin Alvis
 Carla Wallace
 Carolyn Cox & Eric Raman
 Cathy Simon
 Center for Wooden Boats
 Chad Kelderman
 Cheri Constantino
 Chihuly Studios
 Chris Walker
 Christina Brinker & Chad Aschtgen
 Cindy & Paul Scobee
 City Cellars Wines
 Connie Amundson
 Cyndi DeSoto
 Dan Bermurizio
 Dancing Rain Dolls
 Darwin Nordin

Dorine Harris
 Dusty Gnomes
 Genevieve Barile
 Global Solutions
 Green Lake Chiropractic & Nutritional Healing
 Haven Hair Salon
 Herban Feast
 Holly Bergstrom
 Holly Smith & Café Juanita
 Impressions Photography
 Indigo Girls
 Ingrid Orlow
 Izumi Yamamoto
 Jacqueline Gardner
 Jane Higgins
 Janet Lia & AWE Studio
 Jason Froula
 Jenna Helm
 Jerry James
 Jesse Michener
 Joanne & Mike Montague
 Jodi Gardner and the Kauai Inn
 Joyce Christensen
 Julia Bruk
 Kalika Robinson
 Kelly Demetrio
 Kelly Kaltsukis
 Kevin Conroy

Kim & Eric Bergstrom
 Kimberley Stewart
 Kristen Rice
 Laura & Nels Mason
 Laurie Sharp
 Laurin Jones & Andrew Drake
 Leah Bell
 Linda Hartzell & Mark Perry
 Lisa Ayrault
 Lisa Quinlivan
 Lisanne Yuricich
 Liz & David Mullan
 Margaret Leonard & Michael Silva
 Maria Galvao
 Mark Bryant
 Martha Swain & Mike Buchman
 Martin Lee
 Marty Riemer
 Mary Lentz
 Matthew Patton
 Meg Petty
 Michelle & Brady Millard-Kish
 Michelle & Ranan Burstein
 Mimi & Gary Hetzel
 Mini Mountain
 Mode Organic Salon
 Monique & Drummond Reed

continued next page

JOIN US TO CELEBRATE ON SATURDAY, MARCH 26!

We look forward to honoring all who have helped SWS grow from an idea to a fully developed preschool through twelfth grade school at our 30th Anniversary Celebration on Saturday, March 26 at our grade school campus. We will connect with many of our supporters personally or through letters in the coming months. Please join us for this celebration! For updated information and to RSVP, please check the March 26 listing on our online calendar.

THANK YOU!

A big *thank you* for the gifts to our annual fund, to the Art and Experience Gala, to special projects such as software upgrades, and for the many hundreds of hours of volunteer work for all areas of our school! If there is an error in the listing of contributors below, please accept our sincere apology and contact the SWS office so that we can correct our records.

Below Left: Helping at a Parent Association Social, 2009.

Below Right: Parents help get the school ready to move into, 1988.



30 YEARS OF VOLUNTEERING



ANNUAL FUND

CEDAR

Julie & Calisle Dean
 Kristen Hammerback
 & Mark Smith
 Michelle Frame*
 & Ranan Burstein

SAPLING

Anonymous*
 Cheryl & Norm Smith*
 Cindy Bolton & Stephen Coller
 Cynthia Davis & Jeff Rahlmann
 Geraldine Kline & Mike Kline*
 Ingrid Orlow & David Ornstein
 Jane Higgins
 Joanne & Michael Montague
 Lisa Ladmer & Geoff Price
 Missi & Tim Goss
 Sharlyn & William Turner
 Sonia & Brian Frank
 Stephen Coller
 Steve Donaldson
 Susan Higgins
 Teresa & Scott Graham
 Teresa Posakony
 Willow & Cliff Kushler

SEED

Adam M. Jablonski*
 Andrea & Frank Preiss
 Ann Sebeste &
 Thomas Kayser*
 Anna Chrysler*
 Annette Olson &
 Charlie Halpern
 Anonymous
 Anonymous
 Barbara Bachmann*
 & Manuel Fahndrich
 Betsy Weill* & Tim Bennett*
 Bev* & Gary Yonge
 Brit Poulson
 Britt & Miguel Urquiza*
 Caitlin Walsh &
 Alfred Hellstern
 Carolyn* & David Harris
 Cathy & Howard Simon
 Chaya* & Brad Keefe
 Cheri Constantino
 Cheryl Kordick & Sam Hranac

Ching Family
 Christina Thompson
 Cindy & Rick Scheyer
 Dana Ashton* &
 Gary Neumann
 Darrell Jackson
 Darwin Nordin*
 Diana Wolfe*
 Diane Schmitz
 Diann & Ed Shope
 Elaine Klansnic & Jimmy Jet*
 Elderwise
 Erin Keefe-Martin
 & David Martin
 Eun-Young & Michael Ashby
 Evelyn Velez-Aguayo
 Gabi McCarthy*
 Gina* & David Burger
 Gretchen & David Matis*
 Holly Koteen-Soulé*
 & Michael Soulé
 Iris Kulasic* & Zlatan Fazlic
 Jean Wu & Dave Hall
 Joni & David Nabinger
 Julie Beckman* & Paul Lippert
 K.R. & A.D. Raman
 Kate** & Claude Golden
 Katrina Puetz & John Betz
 Kendra Schmiedeskamp
 & Noble Smith
 Kristen* & Michael Rice*
 Laura & Nels Mason
 Liang Du & Ziyi Wang
 Lisa Wolfe* & Tim Love*
 Mark Perry*
 Martha & Tom Walker
 Martha Swain* & Mike Buchman
 Mary & Mark Thornton
In Memory of Erin Keefe-Martin
 Mary K. Ellingson*
 Meg Petty* & Ken Nabors
 Melissa Borden* & Stuart Deal
 Melissa Hensley & Jeffrey Miller
 Michael Fleming*
 Mimi & Gary Hetzel
 Monique & Drummond Reed
 Morgan Sobel*
 Nancy & Mark Gilbert
 Natalie & David Steiner

Neil J. Weinberg*
 Nettie Fabrie* &
 Wim Gottenbos*
 Niz Marar
 Oliver Fraser*
 Patricia* & David Kim
 Sara Canady* & Jim Krantz
 Stephanie Allen &
 Neil Nathanson
 Susanne & Ra'id Khalil
 Tamara Keefe
 The Scobee Family
 Tricia & Andrew Enfield
 Valerie Bell & Richard Watkins*
 Vreni von Arx Watt &
 Jerry Watt
 Yumiko & Naoki Hirata*

MATCHING GIFTS

Bill & Melinda Gates Foundation
 Boeing
 Carolyn Foundation
 Microsoft

OTHER GIFTS

Amazon
 Barbara Bachmann
 Carolyn Harris
 Cheryl Kordick
 Dennis Shaw
 Gilead
 Manuel Fahndrich
 Mission Fish
 OneCause
 Patricia Kim
 PCC
 Richard Watkins
 Savvy Store
 Shannon Garbaccio
 Sharlyn & William Turner
 Target
 Teresa & Scott Graham
 Tully's Coffee
 University Prep
 Uriel
 Waldorf Collaborative Fund
 of RSF Social Finance

* Denotes a faculty or staff member
 ♦ Denotes board member

AUCTION CONTINUED

Nancy & Mark Gilbert
 Natalie Steiner
 Nettie Fabrie &
 Wim Gottenbos
 Nymbol's Secret Garden
 Pacific Studio
 Patricia Costa Kim
 Philips Oral Healthcare
 Phoenix Farms
 Pilates Northwest
 Redmond Arena Sports
 Remlinger Farms
 Reynolds/Poulson Consulting
 Rob Stevens
 SaraMae Kline
 Seattle Aquarium
 Seattle Sundries
 Serendipity Bistro
 Sharlyn & Bill Turner
 Sharon McNamara
 Shelly & Doug McSweyn
 Slave to the Needle
 Sonia & Brian Frank
 Steve Hobbs
 Studio Q Pilates & Massage
 Susan Ayrault
 Sutra Wellness Center
 Teresa Graham
 Three Cedars Waldorf School
 Tim Bennett
 Tim Love
 Timberline Lodge
 Tom Robbins
 Tracy Rekart &
 Neil McCarthy
 Urban Kitchen Co.
 Yazdi Clothing



2728 NE 100th Street
 Seattle, WA 98125

206.524.5320
www.seattlewaldorf.org